

ELCO TITAN

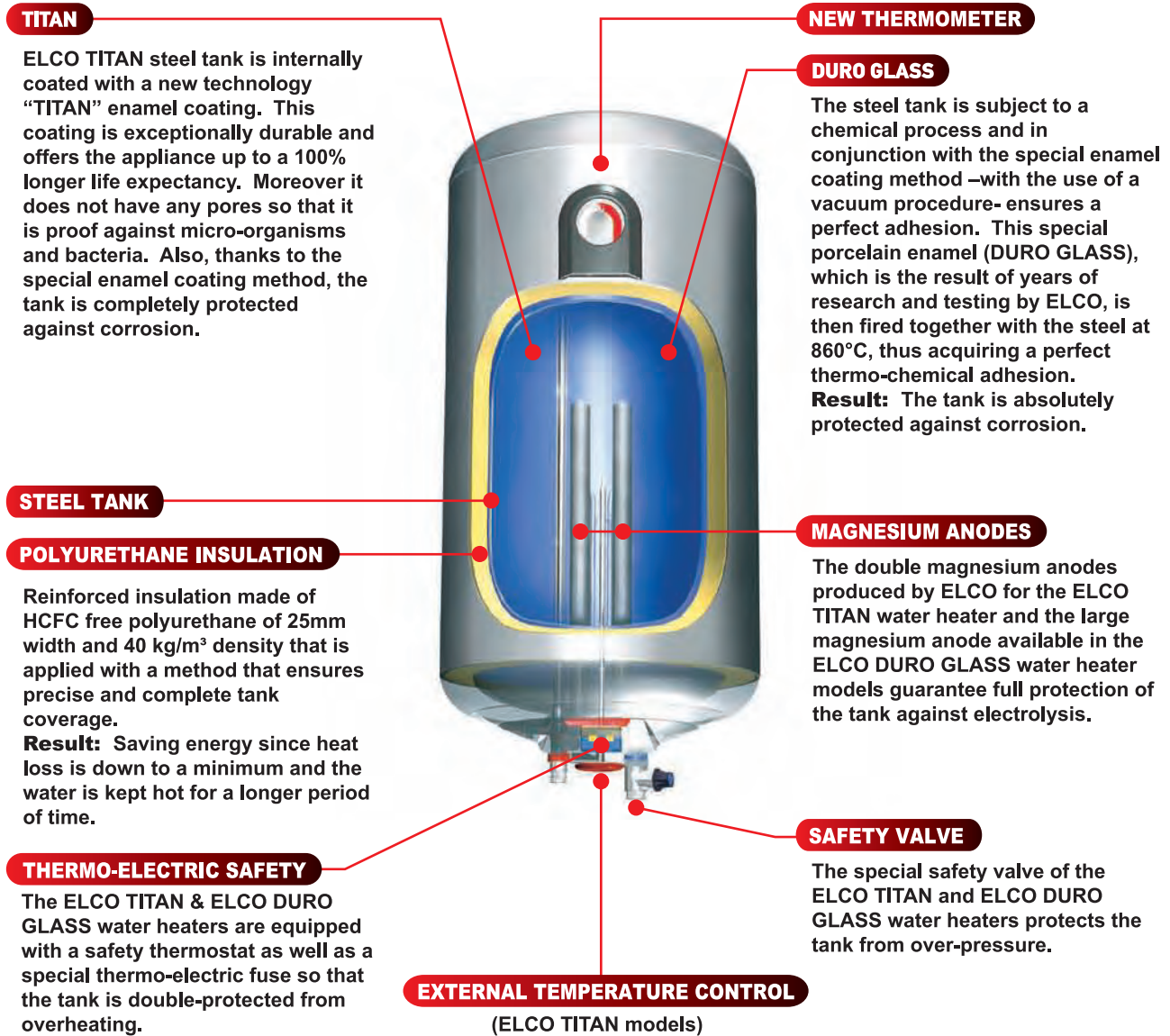


The most famous electric water heater...
The new ELCO TITAN!

 **ELCO**
makes life easier

For someone to become famous he must have...

✓ Unique advantages!



Water heater capacity selection chart

PERSONS

50 L	60 L	80 L	100 L	120 L

CAPACITY



✓ Superiority and Evolution!

- Tank made of high-spec steel sheet, pressure tested at 16 bar
- Tank internal protection with "TITAN" double enamel coating
- Tank protected by two large magnesium anodes produced by ELCO
- Heating element made of 316L stainless steel with low surface load charge
- Safety thermostat with integrated thermo-electric fuse
- Safety valve with diaphragm and drainage
- External temperature control
- External thermometer (for VERTICAL wall-mounting & HORIZONTAL wall-mounting models)
- Heating element indication lamp
- Large inspection flange for easier cleaning and maintenance of the water heater
- HCFC free, rigid polyurethane foam insulation

Models: VERTICAL wall-mounted, HORIZONTAL wall-mounted & FLOOR-mounted
 Capacities: 10, 20, 50, 60, 80, 100 & 120L & Boilers 60, 80, 100 & 120L
 Vertical Super Boilers 80, 100 & 120L

ELCO
TITAN
80L



NEW

ELCO
TITAN
20L



NEW



Save up to 50% energy!

The new ELCO TITAN electric water heater features an external temperature control that enables you to enjoy hot water at the temperature you want... in all 4 seasons! You adjust the desired water temperature according to the season and your needs. As a result you can have energy savings of up to 50%.

All product names are registered & legally protected trademarks of "ELCO VAYONIS S.A."

ANNUAL SAVINGS



ELCO DURO GLASS®

✓ Innovation & Reliability!

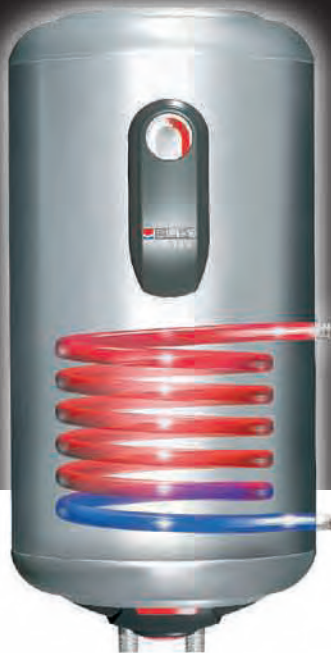
- Tank made of high-spec steel sheet, pressure tested at 16 bar
- Tank internal protection with "DURO GLASS" special enamel coating
- Tank protected by a large magnesium anode produced by ELCO
- Heating element made of 316L stainless steel with low surface load charge
- Safety thermostat with integrated thermo-electric fuse
- Safety valve with diaphragm and drainage
- External thermometer (for VERTICAL wall-mounting & HORIZONTAL wall-mounting models)
- Heating element indication lamp
- Large inspection flange for easier cleaning and maintenance of the water heater
- HCFC free, rigid polyurethane foam insulation

ELCO
DURO GLASS
80L



Models: VERTICAL wall-mounted, HORIZONTAL wall-mounted & FLOOR-mounted
Capacities: 10, 20, 50, 60, 80, 100 & 120L & Boilers 60, 80, 100 & 120L

ELCO
DURO GLASS
10L



BOILERS: The Super Saving Solution!

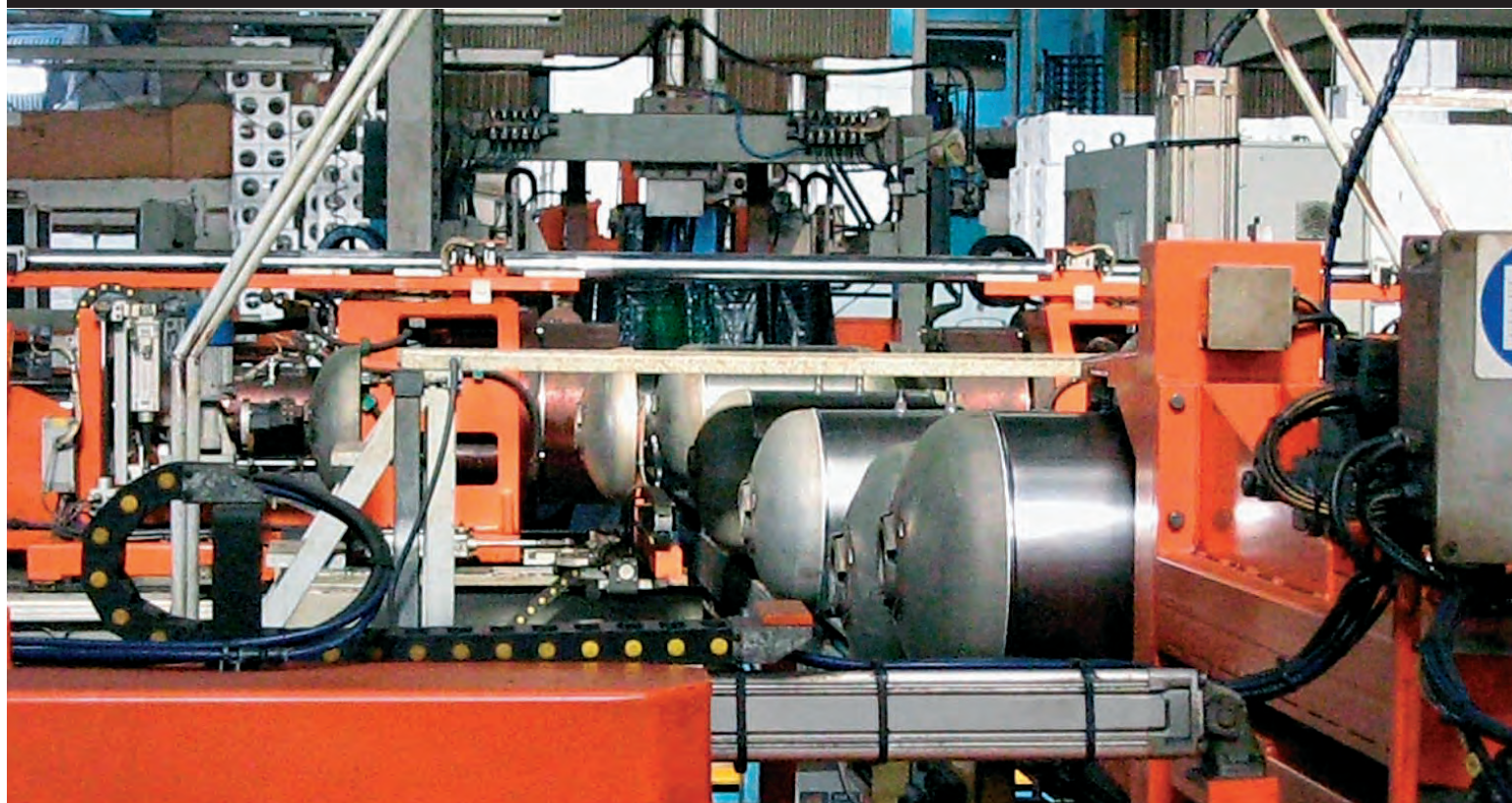
The ELCO TITAN BOILERS & ELCO DURO GLASS BOILERS are equipped with a large, steel-tube (G3/4"), spiral-shaped enamel coated heat exchanger that provides optimum performance. When connected to the central-heating system or to the solar collectors, the boiler supplies free hot water all year around. No electricity needed!

New SUPER BOILER models available with double than standard heat exchanging surface, as powerful as an instant water heater!

Total After Sales Service from ELCO

The ELCO TITAN and ELCO DURO GLASS electric water heaters have been designed to operate with maximum performance for many years. They may never require any SERVICE, but you can be assured that should a problem ever occur, ELCO offers a complete and reliable AFTER SALES SERVICE.

✓ Guaranteed Quality, Safety and Economy!

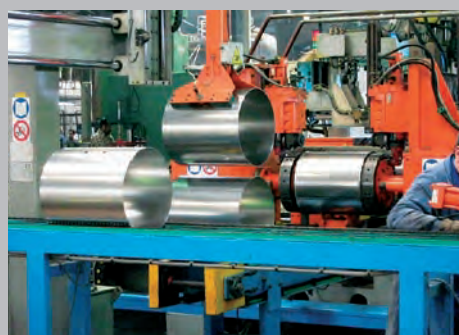


ELCO, the leading manufacturing industry of electric water heaters in Greece since 1950, was the first that implemented and continues to improve the innovative GLASS enamel coating procedure – manifested by the ELCO DURO GLASS name. With its experience of more than half a century and the know-how to invent and apply innovative technologies, ELCO is proud to introduce the new series of ELCO TITAN and ELCO DURO GLASS electric water heaters.

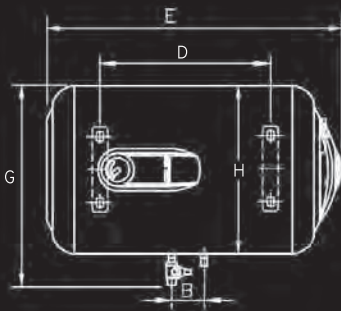
Designed with the use of Computer Aided Design programs (CAD), ELCO electric water heaters are manufactured on a fully automated production line and undergo quality inspections in consecutive phases of the production process. The high manufacturing quality based on European standards and the conformity to ISO 9001:2000 ensures that your ELCO electric water heater will have great longevity as well as an absolutely safe operation.

Moreover the ELCO TITAN external temperature control enables you to adjust the desired water temperature according to the season and your needs for even better performance and lower energy consumption.

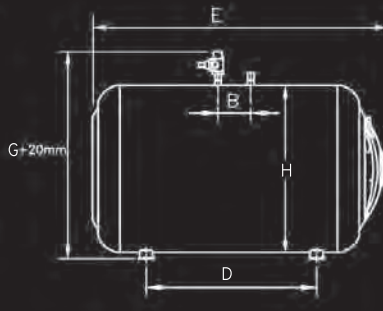
So the ELCO electric water heaters, the top selling water heaters in Greece and with rapidly growing sales in several other markets worldwide, remain the most reliable choice that guarantees the safest and most economical operation so that you can indulge in your everyday activities with peace of mind.



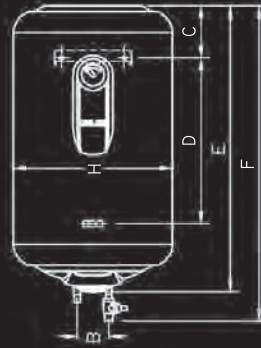
HORIZONTAL



FLOOR



VERTICAL



BOTTOM VIEW



TECHNICAL SPECIFICATIONS OF ELCO WATER HEATERS

CAPACITY	L	10	20	50	60	80	100	120
ELECTRIC POWER	W	1500	1500	3000	3000 / 3700		3700	3700
CURRENT	A	6.5	6.5	13.0	13.0 / 16.0		16.0	16.0
VOLTAGE (50/60Hz)	V	220-240	220-240	220-240	220-240		220-240	220-240
CABLE CROSS-SECTIONAL AREA	mm ²	2.5	2.5	4	4		4	4
WATER CONNECTIONS		G 1/2"	G 1/2"	G 1/2"	G 1/2"		G 1/2"	G 1/2"
OPERATING PRESSURE	bar	Maximum permissible 10						
THERMOSTAT	Control range from 30 to 80°C, integrated safety bipolar thermo-electric fuse							
INSULATION	Rigid polyurethane foam without HCFC minimum thickness 25mm							
INGRESS PROTECTION	IP23							
WEIGHT EMPTY	kg	7	11	20	22	26	30	36
ESTIMATION OF HEATING TIME ΔT 45°C	Hrs:Min	0:24	0:48	0:50	1:13/0:55	1:37/1:13	1:30	1:50

WATER HEATERS WITH HEAT EXCHANGER (BOILERS)

CAPACITY	L		60	80	100	120
ELECTRIC POWER	kg		25.5	31	35	41
HEATING TIME (BOILER INPUT 75°C)			In 20 minutes produces enough hot water			

The rest of the technical specifications of the ELCO Boilers are the same with the ones of the standard water heaters in the respective capacities

DIMENSIONS OF WATER HEATERS ELCO

DIMENSIONS (mm)									PACKAGING DIMENSIONS (mm)		
L	A	B	C	D	E	F	G	H	LENGTH	WIDTH	HEIGHT
10	168	100	95	156	415	445	-	260	440	290	290
20	160	100	134	220	528	553	-	307	551	325	346
50	280	100	195	169	594	611	495	450	675	500	500
60	280	100	226	186	650	667	495	450	731	500	500
80	280	100	226	336	800	817	495	450	881	500	500
100	280	100	226	486	950	967	495	450	1031	500	500
120	280	100	226	665	1130	1147	495	450	1211	500	500

March 2012

Specifications subject to change without notice



ELCO
makes life easier

1^A S. VENIZELOU ST., 14123 LYKOVRISSI ATTICA GREECE, TEL.: +30210 2847800, +30 2102848511, FAX: +30 2102847537
N. GREECE BRANCH: 4 AISSOPOU ST., 57009 KALOCHORI THESSALONIKI GREECE,
TEL.: +30 2310752220, +30 2310752234, FAX: +30 2310752877

URL: <http://www.elco.gr>, e-mail: exports@elco.gr